

## Location Details

A charming village house, set in the small village of Laprade, Charente. As the village is so small it only has a phone box and mail box, however there is a bread van that visits daily.

Aubeterre is only a 15 min walk, said to be one of the prettiest villages in France. Aubeterre has a butcher, baker, bank, museums, underground church and lots of interesting gift shops.



**Sunflowers grow locally during July and August.**

## Getting there

If flying you can use Bergerac (1hr 15 mins), Bordeaux (1 hour 45 mins) or Angouleme (1 hour), you can hire a car from the airports.

There is a train route via Lille, Angouleme then Chalais although we have not tried this method yet.

Driving takes approximately 7.5 hours from Boulogne to the house, a sat-nav can be hired from us if you need it.

## Contact Details

Paul and Angela Holloway  
6 Keyes Avenue  
Chatham  
Kent  
ME4 5TH

Phone: (01634) 819298  
Mobile: 07739 864895  
E-mail: [angelaholloway@kirkwestonbears.fsnet.co.uk](mailto:angelaholloway@kirkwestonbears.fsnet.co.uk)  
[www.maisonpaulange.com](http://www.maisonpaulange.com)



## La Maison Paulange

**French Holiday Home**

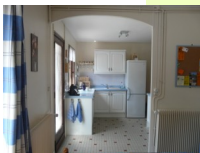
Brochure



Tel: (01634) 819298

[www.maisonpaulange.com](http://www.maisonpaulange.com)

## House Details



### Kitchen

Downstairs there are 2 lounges, dining room, kitchen and toilet.

The main lounge is complete with satellite TV (BB1,2,3, ITV1,2,3 and Channel 4, DVD player with large selection of DVD's, CD player with music cd's, games and books.



### Bedroom

The kitchen is complete with toaster, microwave, full sized calor gas cooker, fridge freezer.

Upstairs there are currently 2 bedrooms, one is a family bedroom with a king size and double bed, wardrobe and dressing table. The other bedroom has a double bed and wardrobe. There is also a family bathroom with a bath shower.

All rooms have hairdryers, lamps and nightlight plugs.

There is a washing machine in the garage along with garden table, chairs and a barbecue.

### Additional information

There is a small courtyard garden at the side of the house with washing line.

There is also a travel cot, buggy and high chair if required.

The house can be rented during the winter periods as it does have central heating but there will be an additional cost for this.

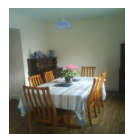
### Activities nearby

There is horse riding, mini golf, nine hole golf course, fishing, kayaking, river beach and many other amenities all within 20 minutes of the house. There are also other local sights within an hour of the house (details are at the house)

The house is on a main cycle route (we have bicycles available for hire if needed)

There are many local markets where you can get fresh produce. Your nearest supermarket is in Chalais where you can also buy petrol.

There is also a small local brewery in the village that is open July and August.



### Dining Room

## Booking Details

All prices are per week and include bed linen, towels, gas electricity and water.

25% non returnable deposit is required at time of booking, with full amount to be paid 6 weeks before arrival.

A returnable damage deposit of £100 is required with final payment (cheque acceptable). The deposit will be returned two weeks after departure, if no damage has been reported.

- Prices are based on 2 people (additional adult/child +25%)
- \*High season price based on up to 4 people sharing (additional adult/child +25%)

From	To	Price	
02/06/12	30/06/12	£320	
<b>28/07/12</b>	<b>01/09/12</b>	<b>£400</b>	<b>* 4</b>
08/09/12	29/09/12	£270	

## Contact Details

6 Keyes Avenue  
Chatham  
Kent  
ME4 5TH

Phone: (01634) 819298  
Mobile: 07739 864895  
E-mail: angelaholloway@kirkwestonbears.fsnet.co.uk  
[www.maisonpaulange.com](http://www.maisonpaulange.com)